

SUPASCREEN®



CLEARGUARD®



AMPLIMESH® GRILLE



SPECIFICATIONS

SupaScreen	316 Marine Grade Stainless Steel Mesh
Perforation	Hole Aperture 1.6mm
Assembly	Patented Co-Extruded Plug
Hinges	Zinc Plated steel with stainless steel pins
Locks	Austral® or Whitco® single point or three point locks

STANDARD COLOURS

Powder Coated	White & Mid Bronze
Anodised	Natural & Bronze
Custom Colours	Dulux Duralloy® Plus colour matched to existing joinery
Mesh	Black only

SPECIFICATIONS

Clearguard	Perforated Hardened Aluminium Mesh
Perforation	Hole Aperture 2.2mm
Assembly	Patented Co-Extruded Plug
Hinges	Zinc Plated steel with stainless steel pins
Locks	Austral® or Whitco® single point or three point locks

STANDARD COLOURS

Powder Coated	White & Mid Bronze
Anodised	Natural & Bronze
Custom Colours	Dulux Duralloy® Plus colour matched to existing joinery
Mesh	Black only

SPECIFICATIONS

Amplimesh Grille	7mm Series 103, 125 and 106*
Hinges	Zinc Plated steel with stainless steel pins
Insect Mesh	Fibreglass mesh / Midge / Pet-Resistant / Look-Out™ One Way Vision Mesh
Locks	Austral® or Whitco® single point or three point locks

STANDARD COLOURS

Powder Coated	White & Mid Bronze
Anodised	Natural & Bronze
Custom Colours	Dulux Duralloy® Plus colour matched to existing joinery
Grille	Colour matched

ADDITIONAL FEATURES

Pet Resistant Mesh

Made of vinyl coated polyester, this fabric is much heavier than traditional fibreglass or aluminium screening. Resistant to tears or damage caused by most pets.

Pet Doors

These fit to all Security Doors. Made from UV stabilised plastic, with magnetic closers, pet doors are available in 3 sizes & 2 colours.

Look-out™ One Way Vision Mesh

With the correct light, Look-out One Way Vision Mesh allows a person on the inside to see out, but not be seen from the visitor's side.

D-Plate

Prevents tearing of mesh when opening or closing the security door.

Heavy Duty Closer

Available for hinged or sliding doors.



Caretaker™ Function

The patented Caretaker one-way locking function allows a door to be snib locked from the outside, (but not unlocked) by a Caretaker key. This enables occupants to unlock the door by simply operating the inside snib lever (without the need for a key). The door can then be opened by pushing down on the unlatching lever.



Three Point Locking Systems

Door is held in place at the top, middle and bottom for extra Security. Available for Ultimate, Elegance & SD7 Murray

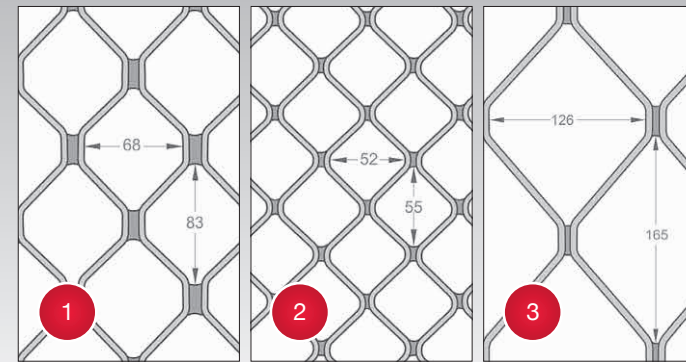


Jemmy Resistant Strike Plate

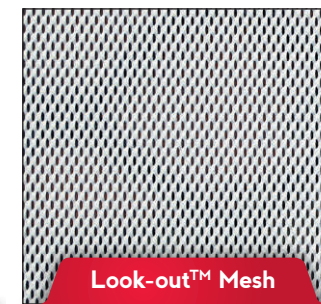
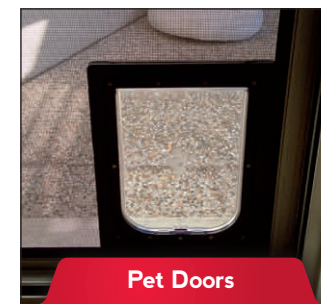
Jemmy resistant strike plate deforms under attack, leaving door locked & secured. Standard for Ultimate and Elegance hinged door lock

GRILLE OPTIONS

- 1 Grille 103 Standard
- 2 Grille 125 Compact
- 3 Grille 106*



*106 is not for Door applications but is suitable for Commercial Windows.



AUSTRAL® SECURITY DOOR LOCK OPTIONS**

The Ultimate™ for Hinged Doors

The Elegance™ for Hinged Doors

The SD7 Murray™ for Sliding Doors

The SD9 Horizon™ for Sliding Doors



Jemmy Resistant Parrot Beak Lock Tongue, Caretaker function



Jemmy Resistant Tongue with deformable strike plate



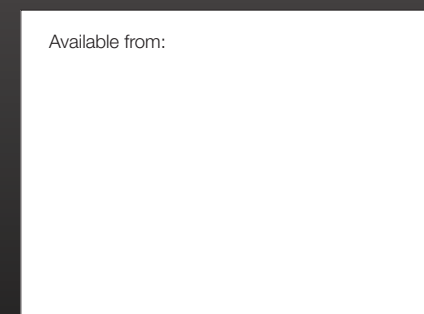
Anti-lift pin on built-up strike prevents door being lifted out



Combine with multipoint kits to create triple-point locking for improved security

For warranty terms & conditions see www.homeplus.co.nz

**Whitco Tasman MK2 and Leichardt Locks (not illustrated) also available



Our team of professionals will help you choose and customise your new security screen with expert guidance and a quote.

For more information call your local HomePlus store on **0800 466 375**



www.homeplus.co.nz

HBR/SECURITY/23

SECURITY DOORS & WINDOWS



www.homeplus.co.nz

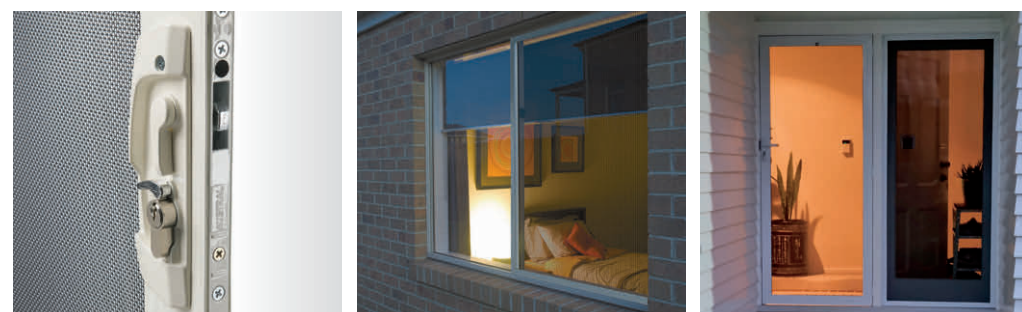
Secure your home today call 0800 466 375

The products in this catalogue are the subject of intellectual property protection. HomePlus®, the HomePlus Device® are registered trademarks of Juralco Aluminium Building Products Ltd. All dimensions given are approximate and should be checked prior to installation. Photographs or illustrations may not exactly match the specification available in your area. Please consult your nearest HomePlus display centre for advice. © Juralco Aluminium Building Products Ltd 2023.

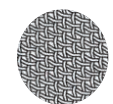
SUPASCREEN®

PRODUCT FEATURES AND BENEFITS

- Security Door tested to Australian Standards AS5039-2008 and A55041 (clause 7.2) Dynamic Impact Test
- Enjoy clear unobstructed views
- Maximum strength and durability
- High tensile 316 marine grade stainless steel
- Modern innovation
- Unique patented pressure assembly process
- Corrosion resistant
- 10 year warranty
- Available in a range of frame colours
- Standard hardware included
- Optional 3 point locking mechanism
- Hinged / Sliding / French / Stacker Door Systems
- Hinged / Sliding window systems



Mesh style – Woven



316 Marine Grade Stainless Steel

BE SECURE AND STILL ENJOY THE VIEW

SupaScreen® security door and window screens are an innovative design that allows for unobstructed views, whilst maximising strength and security. Produced from high-tensile stainless steel that is woven into a fine mesh, SupaScreen® combines exceptional security with an aesthetically pleasing appearance.

The screens are assembled using a unique patented pressure assembly process which eliminates any need for screws or rivets. This also means no dissimilar metal meets the mesh, eliminating possible points of corrosion. Rigorously tested for resistance to forced entry, the strength of the 316 Stainless Steel mesh and frame enables SupaScreen to meet and exceed the Australian Standard AS5039-2008 for Security, Cyclonic Missile Impact and Knife Shear Tests.

The ability to Powder Coat the frame to match the colour of existing joinery, the strength and security of SupaScreen® and its unrestricted view through the fine mesh screen make SupaScreen® perfect as a front entrance that will not detract from the appearance of the home.

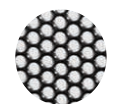
CLEARGUARD®

PRODUCT FEATURES AND BENEFITS

- Security Door tested to Australian Standards AS5039-2008 and A55041 (clause 7.2) Dynamic Impact Test
- See through screen doesn't block view
- Superior structural grade aluminium alloy mesh
- Unique patented pressure assembly process
- Reduces heat and glare
- 7 year warranty
- Available in a range of frame colours
- Standard hardware included
- Optional 3 point locking mechanism
- Hinged / Sliding / French / Stacker Door Systems
- Hinged / Sliding window systems



Mesh style – Perforated



1.6mm hardened aluminium sheet

Note: Some vertical 'read' lines will be visible when viewing up close

LET'S LET THE FRESH AIR IN, BUT THAT'S ALL

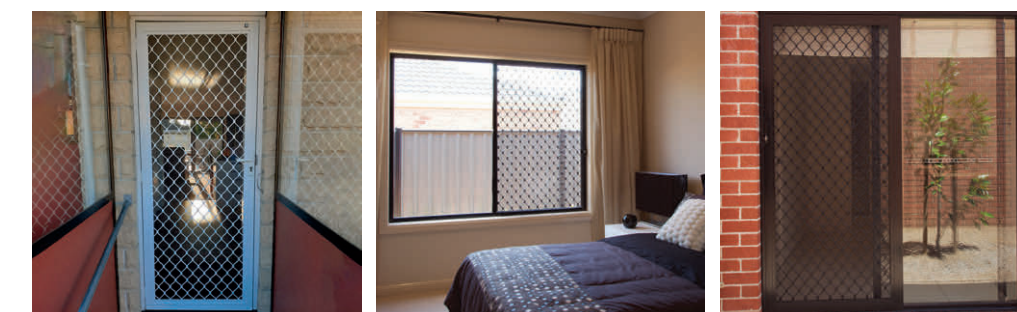
Clearguard® represents the latest innovation in home security screens in NZ and is a modern alternative to Amplimesh® grilles and the premium woven stainless steel SupaScreen mesh. The screens are assembled using a unique patented pressure assembly process, which removes any requirement for screws or rivets.

The use of a hardened 1.6 mm thick aluminium sheet that is less intrusive than the traditional aluminium diamond grilles, and its innovative design created with punched holes make a Clearguard® screen virtually translucent. This provides quality security without blocking your view and is particularly useful during warm weather when you likely want to leave doors and windows open to promote airflow. Its strong aluminium frames are able to be powder coated to the colour of choice or to match existing joinery. Proven strength and security as Clearguard® has been tested to meet and exceed Australian Standard AS5-039-2008 for Security and Knife Shear Tests.

AMPLIMESH® GRILLE

PRODUCT FEATURES AND BENEFITS

- Security Door tested to Australian Standards AS5039-2008
- Visual deterrent
- Tried and tested, over 50 years in the market
- Choice of grilles available powder coated in colour of choice
- Fibreglass insect mesh standard feature
- Pet Resistant, Midge and Look-out™ One Way vision mesh optional.
- 5 year warranty*
- Available in a range of frame colours
- Standard hardware included
- Entry level security for doors and windows
- Optional 3 point locking mechanism
- Hinged / Sliding / French / Stacker Door Systems
- Hinged / Sliding window systems



Mesh style – Expanded



Aluminium grille 103



Aluminium grille 125



Aluminium grille 106 *

*106 is not for Door applications but is suitable for Commercial Windows.

VISUALLY DETERRING UNWANTED GUESTS

Amplimesh® grille window and door screens offer peace of mind against uninvited visitors, representing a visual deterrent to unwelcome guests and are a high-quality physical barrier against anyone attempting to break in. With insect mesh as a standard feature on all Amplimesh® screens, homeowners can also enjoy open doors or windows to enable airflow and fresh air to enter without unwanted visitors, mosquitos or flies having access.

Recognised for its superior quality and longevity, Amplimesh® has been reassuring customers security has been taken care of, for over 50 years in New Zealand. Security screens from the Amplimesh® range are available in a variety of grille styles, and both the grille and frame come in a range of standard colours or can be powder coated from the Dulux® range of colours to match existing joinery or preference.